

Installation Instruction

FORWARD CONTROL KIT DYNA 1991 UP

ATTENTION INSTALLER (if other than owner): Please forward this Instruction Sheet to the purchaser of this product. These instructions contain valuable information necessary to the end user.

INTRODUCTION: These instructions describe the procedure for properly installing these forward controls on all '91-'14 Dyna models; except, '10-'14 FXDWG, FXDF with stock exhaust.

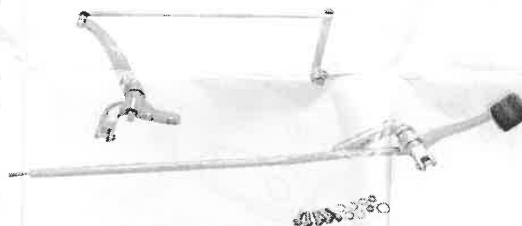
Review these instructions carefully before beginning, as they contain important information. Please retain for future reference.

Particularly important information is distinguished in these instructions by the following notations:

NOTE: A NOTE provides key information to make procedures easier or clearer.

CAUTION: A CAUTION indicates special procedures that must be followed to avoid damage to the motorcycle and/or accessories.

WARNING!: A WARNING indicates special procedures that must be followed to avoid injury to a motorcycle operator or person inspecting or repairing the motorcycle.



TOOLS REQUIRED:

- 9/16" Combination wrenches
- 1/2" Combination wrenches
- 7/32" Hex key
- 1/4" Hex key
- Torque wrench

PROCEDURE:

1. Remove the plastic plugs from the holes in the front down frame tubes. Retain these plugs to install in the holes where the stock controls are removed.
2. Remove the stock brake, shift controls and linkage. Retain the stock footpegs, shift lever and shifter for later use.
3. Install the plastic plugs removed in **Step 1** in the locations where the stock controls were removed.
4. Secure the stock "through the case" shift shaft with a tie-wrap (removal of the shift shaft requires disassembly of the outer and inner primary case).
5. Install the brake pedal backing plate (18) and shift lever backing plate (7) to the frame using button-head screws and lock washers (8) provided in the kit. Tighten to 30 ft.-lbs.
6. Lubricate the shift shaft bushings. Install the spring washer (5) on the shifter lever shaft; and push shift lever shaft (4) through shift lever backing plate (7).
7. Install shifter rod (1) to lever on transmission (6) and shift lever shaft (4). Tighten to factory specifications (12 ft.-lbs.).
14. Tighten the brake rod lock nut (26).
15. Mount the footpeg (D from **Step 2**) and "anti-rattle" spring plate (4) to the brake pedal bracket (7); secure using clevis pin and E-clip.

NOTE: Brake rod MUST be free and not bind. If not free, rear brake/pads may overheat/burn. Adjust according to the OEM workshop manual.

8. Install footpeg (from **Step 2**) to shift lever backing plate, making sure to install "anti-rattle" spring plate between the footpeg and peg mount on the backing plate. Secure with included clevis pin and E-clip.

9. Install shift peg (from **Step 2**) to shift lever (A, from **Step 2**). Install the shift lever (A) on the shift shaft (4). Adjust as required. Install the lock washer (B) and 5/16" UNC socket-head bolt (C) and tighten to 19 ft.-lbs.

10. Push the 3/8" socket-head bolt (23) through the hole in the footpeg mount clevis (21). Slide the brake pedal pivot shaft (19) onto 3/8" socket-head bolt.

NOTE: There is a step on the end of the brake pivot shaft that locates the footpeg clevis. Make sure the pivot shaft is indexed correctly into the step.

11. Put some grease inside the brake pedal bushing and slide the brake pedal (16) over the brake pivot shaft. Install the assembly of the footpeg clevis, brake pivot shaft and brake lever onto the brake pedal bracket (18). Make sure the pivot shaft is indexed correctly into the step on the brake pedal bracket. Tighten the bolt (23) to 30 ft.-lbs.

12. Screw the lock nut (26) on the brake rod (25).

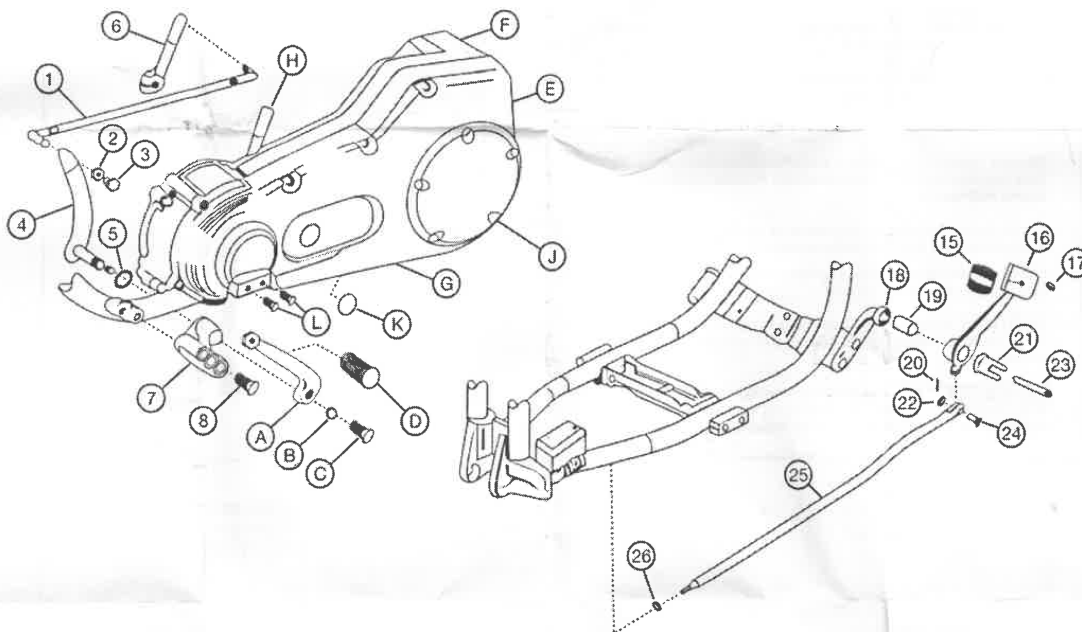
13. Screw the brake rod (25) into the master cylinder to the point where the clevis pin (24) can be installed through the brake pedal (16) and the brake rod (25). Secure the clevis pin (24) with the washer (22) and cotter pin (20).

NOTE: Use thread-locking adhesive on the first three threads of all hardware.

WARNING!: Before operating the motorcycle, be sure all of the hardware is tight.

Installation Instruction

FORWARD CONTROL KIT DYNA 1991 UP



ITEM	DESCRIPTION
1	SHIFTER ROD
2	WASHER, 5/16 in. x 11/16 in. x 1/16 in.
3	ACORN NUT, 5/16-24 NF
4	SHIFTER SHAFT AND LEVER
5	SPRING WASHER 16MM, BLACK (2)
6	TRANSMISSION SHIFT LEVER
7	SHIFTER BRACKET
8	3/8 in.-16 x 1 in. BUTTON HEAD SCREWS (4)
15	BRAKE PEDAL PAD
16	BRAKE PEDAL
17	NYLON NUT 1/4"-20
18	BRAKE PEDAL BRACKET
19	BRAKE PEDAL PIVOT SHAFT
20	COTTER PIN
21	FOOTREST MOUNT CLEVIS
22	WASHER, 1/4 in. x 7/16 in. x 1/16 in.
23	3/16-16x2 3/4" SOCKET HEAD SCREW
NOT LISTED BUT INCLUDE WITH THE KIT	
1	3/8" SPLIT WASHER (4)
2	5/16-24x1" SOCKET HEAD SCREW
3	BLACK PLASTIC SPACER (2) 21x28x1MM

ITEM	DESCRIPTION
24	CLEVIS PIN
25	BRAKE ROD
26	HEX NUT 5/16-24
ITEMS MENTIONED IN TEXT, BUT NOT INCLUDED IN KIT	
A	SHIFTER LEVER
B	WASHER
C	BOLT
D	FOOTREST (LEFT HAND)
E	OUTER COVER
F	INNER COVER
G	PRIMARY COVER HOLE
H	SHIFTER SHAFT AND LEVER (OLD)
I	FORWARD CONTROL FRAME MOUNT
J	SEALING FASTENERS
K	PRIMARY HOLE PLUG
L	HOLE PLUG