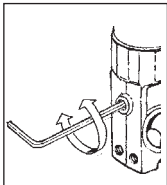
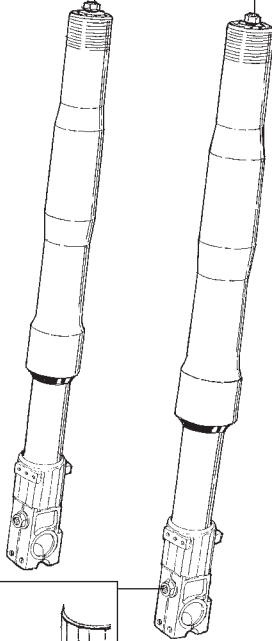
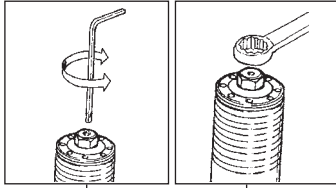


Rebound damping  
adjuster

Spring preload  
adjuster



Compression  
damping adjuster

## Öhlins front fork 43

Your Öhlins front fork 43 is an upside down type front fork featuring the following adjusters.

### Compression damping adjuster

Adjustments are made at the bottom of the front fork leg. Use a 3 mm allen key.

### Rebound damping adjuster

Adjustments are made at the top of the fork leg. Use a 3 mm allen key.

### Spring preload adjuster

Adjustments are made by turning the nut at the top of the fork leg. Clockwise for harder adjustment, counter clockwise to release the preload. Use a 17 mm wrench.

The adjusters have a normal right hand thread. Turn the damping adjusters clockwise to fully closed (pos. zero [0]). Turn counter clockwise to open and count the clicks until you reach the desired position.

### Caution!

*Do not use too much force, delicate sealing surfaces can be damaged.*

**Öhlins Front Fork Kit FG 424 Universal Black**

# FG 424

## Mounting Instructions



# How to install

## Safety signals

Important information concerning safety is distinguished in this manual by the following notations:



*The Safety alert symbol means: Caution! Your safety is involved.*



### Warning!

*Failure to follow warning instructions could result in severe or fatal injury to anyone working with, inspecting or using the suspension, or to bystanders.*



### Caution!

*Caution indicates that special precautions must be taken to avoid damage to the suspension.*



### Note!

*This indicates information that is of importance with regard to procedures.*

## Before installation

Öhlins Racing AB can not be held responsible for any damage whatsoever to front fork or vehicle, or injury to persons, if the instructions for fitting and maintenance are not followed exactly.

Similarly, the warranty will become null and void if the instructions are not adhered to.

### Warning!

*1. Installing a front fork, that is not approved by the vehicle manufacturer, may affect the stability of your vehicle. Öhlins Racing AB cannot be held responsible for any personal injury or damage whatsoever that may occur after fitting the front fork. Contact an Öhlins dealer or other qualified person for advice.*

*2. Please study and make certain that you fully understand all the mounting instructions and the owners manuals before handling this front*

*fork kit. If you have any questions regarding proper installation procedures, contact an Öhlins dealer or other qualified person.*

*3. The vehicle service manual must be referred to when installing the Öhlins front fork*

Öhlins products are subject to continual improvement and development. Consequently, although these instructions include the most up-to-date information available at the time of printing, there may be minor differences between your suspension and this manual. Please consult your Öhlins dealer if you have any questions with regard to the contents of the manual.

### Note!

*During storage and transportation, especially at high ambient temperature, the oil and grease used for assembling may run out inside the packing and damage the expanded polystyrene packing material. This is not unusual and is in no way detrimental to the front fork.*

## Kit contents

Before installing the front fork, please check the contents of the kit. If anything is missing, contact your Öhlins dealer.

Description	Pcs.	Part No.
Front Fork type 43	1	04790-12
Sticker Öhlins	2	01185-01
Owner's Manual	1	

## Fitting the front fork

1. Put the bike on a stand so the front wheel has ground clearance. Make sure it's steadily positioned and will not fall over.

### **Warning!**

*1. It's advisable to have an Öhlins dealer or other qualified person to fit your front fork.*

*2. When working on a lifted vehicle it must be securely supported to prevent it from falling.*

2. Tighten first the upper triple clamp than the lower one to correct torque.

### **Caution!**

*Do not overtighten. The legs can be deformed and cause malfunction*

3. Refit the wheel and the front wheel shaft. Do not tighten yet.
4. Fit the brake calipers on both sides.
5. Lower the motorcycle. Apply the front wheel brake and push the front suspension down, two or three times. This will put the fork legs in a parallel position.

### **Note!**

*Another way is to rotate the wheel as fast as possible and bring it to a fast stop by braking. This will bring the legs in correct position.*

## Torque Information

Upper triple clamp:	18 - 22 Nm
Lower triple clamp:	12 - 15 Nm
M8 bolts:	18 - 22 Nm
M6 bolts:	7 Nm (maximum)
M5 bolts:	5 Nm (maximum)

6. Tighten the wheel shaft and shaft clamps so the fork legs are in fixed position. Tighten the fender and caliper brackets.

### **Note!**

*Make sure that all bolts are tightened in correct torque and that nothing restrains the front fork when the suspension is being compressed or extended.*

### **Warning!**

*Certain modifications can be necessary to install the Öhlins front fork. It is vital that the mounting instructions are carefully followed*

7. Continue your work according to Owners manual, section Adjustments.

# How to Install

## Wheel shaft

The wheel shaft must fit exactly into the 32 mm bracket holes of the fork bottom pieces. If the shaft has smaller dimensions, correct shaft sleeves must be used.

## Caution!

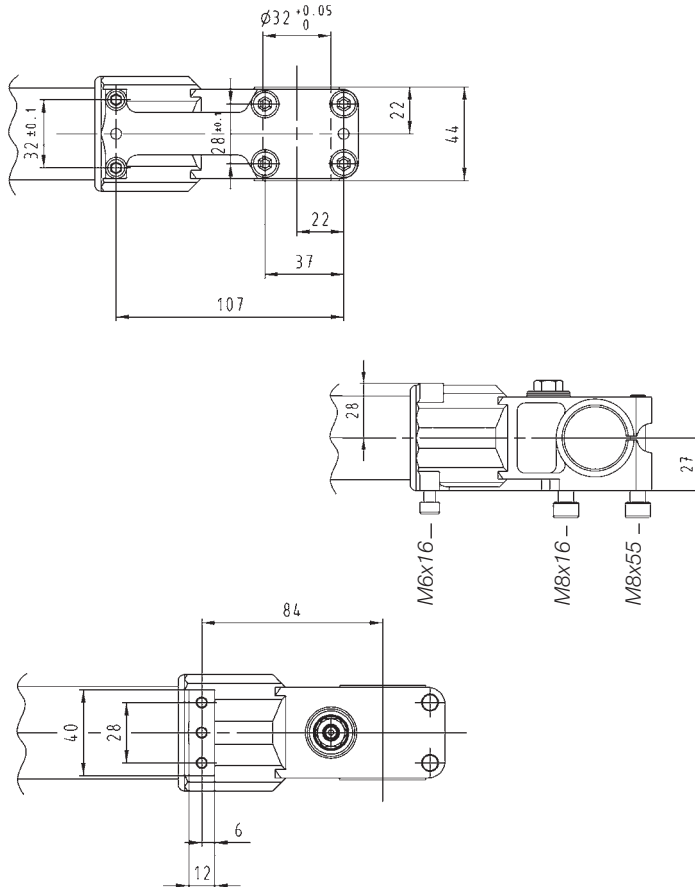
*It is of vital importance that the wheel shaft diameter and length is correct: Shaft sleeves must be aligned with the outer side of the bottom pieces. It is of vital importance that the shaft can not pull the fork legs together.*

## Note!

*When fitting the wheel shaft, apply some grease to the surfaces so the shaft slides easily through the fork bottom pieces*

## Fabrication

Use materials of high quality and adequate dimensions to fabricate sleeves, caliper brackets and fender brackets. The caliper bracket is mounted with M8 bolts and M6 bolts. The fender brackets are mounted with M5 bolts.



# How to Install

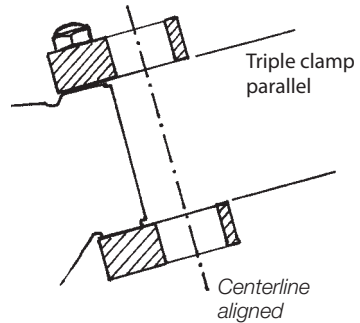
## Mounting recommendations

We recommend the mounting of the front fork to be performed by an authorized Öhlins dealer or by other skilled professional workshop.

## Triple clamps

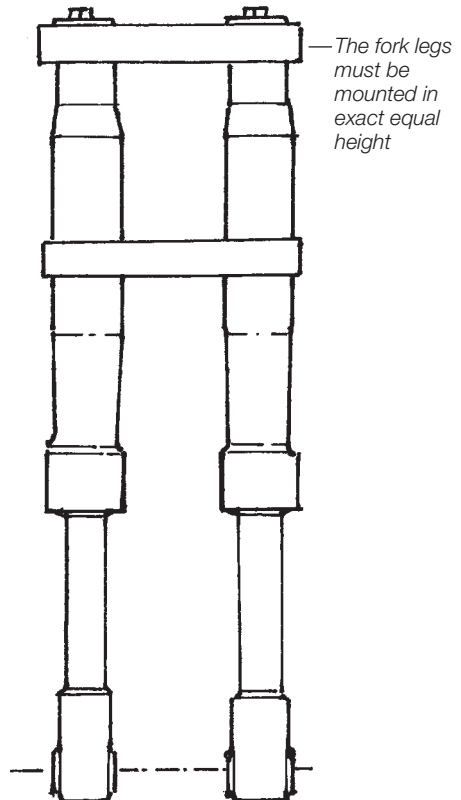
The fork triple clamps must be made with high accuracy and the fork leg mounts must be in an absolute straight line not to cause malfunctions.

Hole diameter upper triple clamp:	50 mm
Hole diameter lower triple clamp:	54 mm

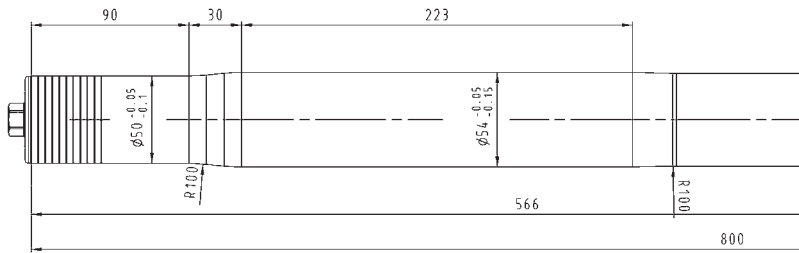
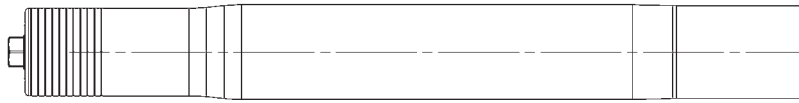
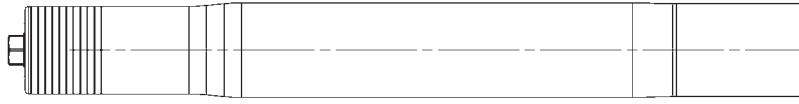


## Caution!

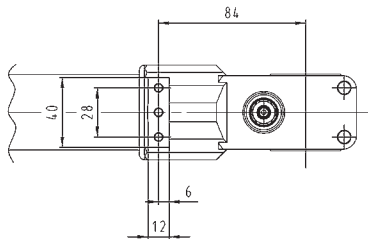
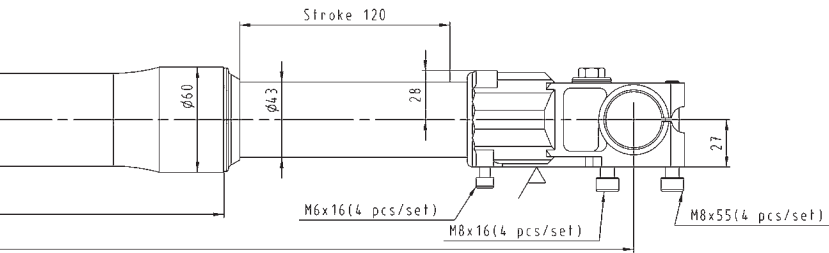
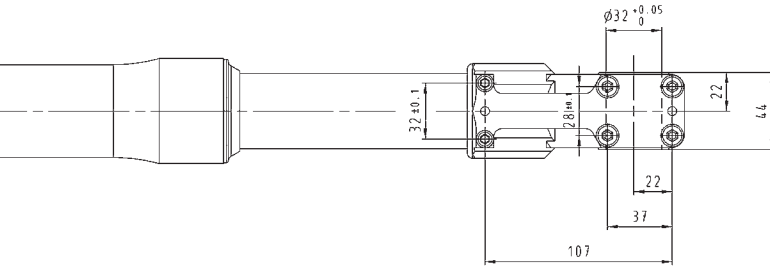
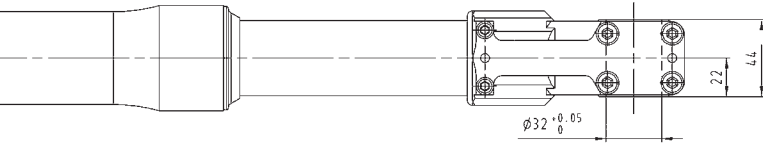
*Not aligning the fork crowns will destroy the outer tube and bushings. Make sure that the fork legs are completely parallel and that they have the same height position in the triple clamps. Even very small differences may cause malfunction.*

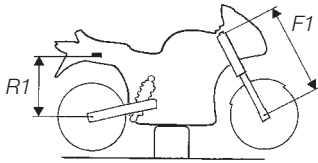


# How to Install

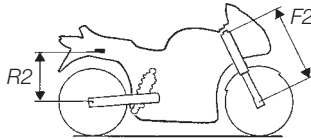


# How to Install

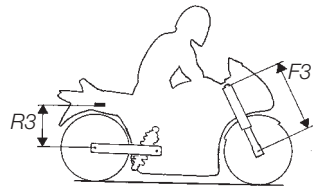




Bike on a stand.



Bike on the ground.



Bike with rider on.

### Setup data

Length	800 mm
Stroke	120 mm
Rebound damping adjuster	12 clicks*
Compression damping adj.	10 clicks*
Spring pre-load	13 mm*
Spring rate	9,5 N/mm*
Oil level	170 mm*

\*When delivered from Öhlins.

### Checking sag and ride height

#### Front suspension

F1. Bike on a stand with the suspension fully extended = .....

F2. Bike on the ground without rider = .....

F3. Bike on the ground with rider = .....

Free sag F1 - F2 = .....

Ride height F1 - F3 = .....

#### Rear suspension

R1. Bike on a stand with the suspension fully extended = .....

R2. Bike on the ground without rider = .....

R3. Bike on the ground with rider = .....

Free sag R1 - R2 = .....

Ride height R1 - R3 = .....

Öhlins products are subject to continuous improvement and development, therefore, although these instructions include the most up-to-date information available at the time of printing, minor updates may occur.

To find the latest information contact your Öhlins distributor. Please consult your Öhlins dealer if you have any questions regarding the contents in this document.

Part no. FG 424  
Issued 2012-11-28



© Öhlins Racing AB. All rights reserved. Any reprinting or unauthorized use without the written permission of Öhlins Racing AB is prohibited.

Öhlins Racing AB  
Box 722  
S-194 27 Upplands Väsby, Sweden  
Phone +46 8 590 025 00  
fax +46 8 590 025 80



[www.ohlins.com](http://www.ohlins.com)