



# INSTALLATION

## ZOMBIE LEVERS

### PARTS INCLUDED

- 1 Zombie Clutch Lever
- 1 Zombie Brake Lever
- 2 Zombie Emblems
- 2 Grooved Emblems
- 1 Installation Instructions

Please read and understand entire instructions before starting installation.

### THANK YOU FOR CHOOSING KÜRYAKYN!

**IN ORDER TO PROTECT YOU AND OTHERS FROM POSSIBLE INJURY AND/OR PROPERTY DAMAGE OR LOSS, PLEASE PAY CLOSE ATTENTION TO ALL INSTRUCTIONS, WARNINGS, CAUTIONS AND NOTICES REGARDING THE USE AND CARE OF THIS PRODUCT.**

#### **WARNING**

**THIS INDICATION ALERTS YOU TO THE FACT THAT IGNORING THE CONTENTS DESCRIBED HEREIN CAN RESULT IN POTENTIAL DEATH OR SERIOUS INJURY.**

#### **NOTICE**

**This indication alerts you to the fact that ignoring the contents described herein may negatively affect product performance and functionality.**

#### **NOTICE**

**IF INSTALLING THIS PRODUCT FOR ANOTHER PARTY, PLEASE MAKE SURE THEY RECEIVE THIS COPY OF THE INSTALLATION INSTRUCTIONS SO THEY ARE AWARE OF THE IMPORTANT INFORMATION CONTAINED IN THEM.**

### TOOLS SUGGESTED

Snap Ring Pliers, Set of Combination Wrenches, Set of Torx Wrenches

**STRICTLY OBSERVE THE FOLLOWING GUIDELINES IN ORDER TO USE THE PRODUCT PROPERLY AND AVOID POTENTIALLY DANGEROUS ACCIDENTS.**

#### STEP 1

Read and understand all steps in the instructions before starting the installation. Park the motorcycle on a hard, level surface and turn off the ignition.

#### **WARNING**

**A FACTORY SERVICE MANUAL WILL BE HELPFUL IN PERFORMING THIS INSTALLATION. DO NOT ATTEMPT TO PERFORM THIS INSTALLATION IF YOU ARE NOT CONFIDENT IN YOUR ABILITY TO COMPLETE ALL OF THE STEPS IN THE PROCEDURE; CONSULT A TRAINED TECHNICIAN. IMPROPER INSTALLATION COULD RESULT IN SERIOUS INJURY OR DEATH.**

#### **NOTICE**

**Avoid damage to the motorcycle. Protect painted surfaces with a soft cloth or blanket.**

#### STEP 2

With your snap ring pliers, remove and retain the snap rings located on the bottom of each lever pivot pin. Remove both pivot pins.

### CUSTOMER SERVICE

877.370.3604 (toll free)

### INSTALLATION QUESTIONS

techsupport@kuryakyn.com  
or call 715.247.2983

### LIMITED WARRANTY

Kuryakyn warrants that any Kuryakyn products sold hereunder, shall be free of defects in materials and workmanship for a period of one (1) year from the date of purchase by the consumer excepting the following provisions:

- Kuryakyn shall have no obligation in the event the customer is unable to provide a receipt showing the date the customer purchased the product(s).
  - The product must be properly installed, maintained and operated under normal conditions.
  - Kuryakyn makes no warranty, expressed or implied, with respect to any gold plated products.
  - Kuryakyn shall not be liable for any consequential and incidental damages, including labor and paint, resulting from failure of a Kuryakyn product, failure to deliver, delay in delivery, delivery in nonconforming condition, or for any breach of contract or duty between Kuryakyn and a customer.
- Kuryakyn products are often intended for use in specific applications. Kuryakyn makes no warranty if a Kuryakyn product is used in applications other than intended.
- Kuryakyn electrical products are warranted for one (1) year from the date of purchase by the consumer. L.E.D.'S contained in components of Kuryakyn products will be warranted for defects in materials and workmanship for 3 years from the date of purchase where as all other components shall be warranted for one(1) year. This includes, but is not limited to; control modules, wiring, chrome & other components.

- Kuryakyn makes no warranty of any kind in regard to other manufacturer's products distributed by Kuryakyn. Kuryakyn will pass on all warranties made by the manufacturer and where possible, will expedite the claim on behalf of the customer, but ultimately, responsibility for disposition of the warranty claim lies with the manufacturer.

### ABOUT OUR CATALOG

For purchasing Kuryakyn® products, you can receive a complete catalog free of charge. Send the Proof-of-Purchase below with your address to: Kuryakyn, P.O. Box 339, Somerset, WI 54025. Please indicate either Accessories Catalog for Harley-Davidson® or GL & Metric Cruisers.

Be sure to ask your local dealer about other Kuryakyn® products, the motorcycle parts and accessories designed for riders by riders.

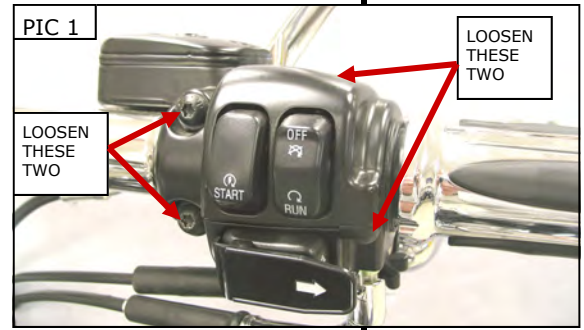
©2005 Kuryakyn USA® All Rights reserved.



kuryakyn.com

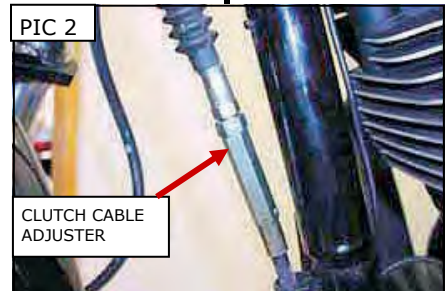
**BRAKE SIDE**

**STEP 3** Loosen the screws that secure the switch housing, as well as the clamp as shown in PIC. 1; **do not remove them.**



**STEP 4** Refer to the service manual for steps to ensure the brake light switch is not damaged before carefully removing the brake lever from the master cylinder assembly. Remove the OEM nylon pin bushing from the lever. Place a small amount of grease on the pivot pin. Insert the OEM nylon bushing in place in the lever and place the lever into the master cylinder — **DO NOT FORCE IT!** If it does not go in with ease, make sure the thin tab on the brake lever is positioned at the end of the master cylinder plunger. When the pivot pin can be inserted easily through the master cylinder housing and the lever it is positioned correctly. Tighten the screws that were loosened in STEP 3. Gently squeeze the brake control a few times to ensure proper operation. Replace the snap ring on the pivot pin. Squeeze brake lever, with the key in the ON position, to test for correct brake light function.

**WARNING** CHECK BRAKE LIGHT FUNCTION BEFORE OPERATING THE MOTORCYCLE.



**WARNING** AS A SAFETY PRECAUTION, WE RECOMMEND TESTING TO BE CERTAIN THE FRONT BRAKE IS NOT DRAGGING. TO DO THIS YOU MAY NEED THE HELP OF A FRIEND. WITH A SMALL JACK OR LIFT, ELEVATE THE FRONT WHEEL OFF THE GROUND. SPIN THE FRONT WHEEL; IT SHOULD SPIN FREELY FOR A COUPLE OF REVOLUTIONS. IF IT MOVES WITH NOTICEABLE RESISTANCE OR SEEMS TO STICK OR BIND, THE BRAKES ARE DRAGGING AND ONE SHOULD GO BACK AND REVIEW THE INSTALLATION TO DETERMINE THE CAUSE OF THIS BRAKE DRAG BEFORE THE MOTORCYCLE IS OPERATED.



**CLUTCH SIDE**

**STEP 5** Loosen the clutch cable adjuster PIC 2 so the maximum amount of slack is attained. (Refer to the picture sequence.) Pull the cable housing as far out of the clutch perch as possible PIC 3 and rotate the cable and housing away from the handlebar PIC 4. The lever may now be pulled free of the perch PIC 5.



**STEP 6** Slide the nylon cable anchor out of the stock lever freeing the cable. Remove the OEM nylon pin bushing from the lever. (Now is a good time to lube your clutch cable. Apply a small amount of grease to the pivot pin. Make sure the nylon bushing is in place in the new lever, and reassemble in reverse order of disassembly. Replace the snap ring on the pivot pin. Adjust the clutch cable so there is about 1/8" of free play in the lever. Tighten the adjuster locknut (easy, or you can break the adjuster!) Replace the rubber boot or cover over the adjuster.



**NOTICE** It is the installer's responsibility to ensure that all of the fasteners (including pre-assembled) are tightened before operation of the motorcycle. Küryakyn will not provide warranty coverage on products or components lost due to improper installation or lack of maintenance. Periodic inspection and maintenance are required on all fasteners.

-cont.-

**STEP 7** Clean the flat spot on the levers as circled in PIC 6 with the included alcohol pad & allow the area to dry.

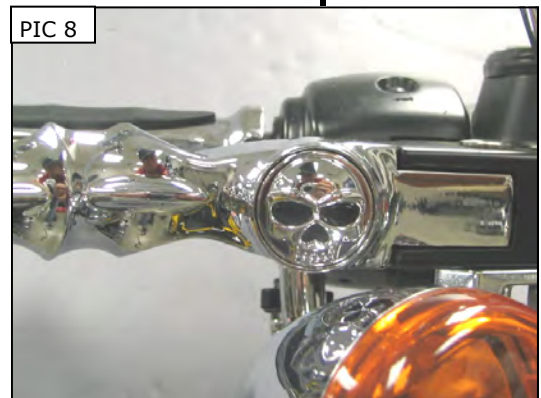
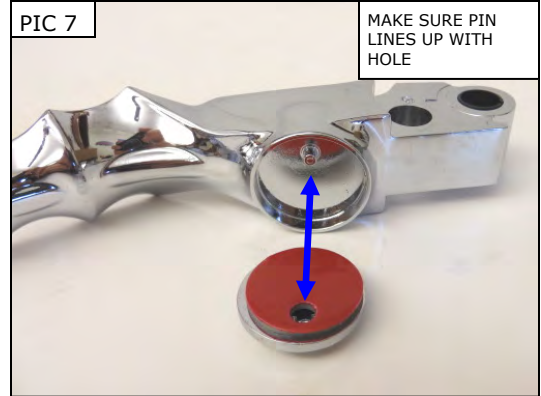
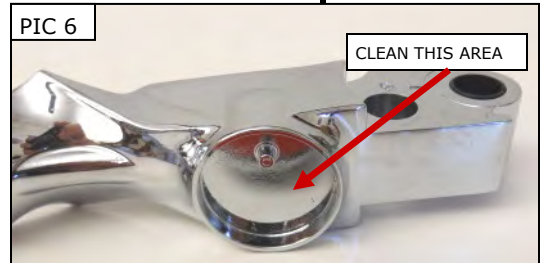
**NOTICE** Ensure the area of installation is free of grease, oil, dirt or other debris including wax/polish products and bugs to ensure proper adhesion. Küryakyn WILL NOT issue a warranty on any parts lost due to improper installation.

**NOTICE** The adhesive will not bond correctly if applied at temperatures less than 50° F. Do not attempt this installation in temperatures less than 50° F.

**STEP 8** Choose which emblem you wish to install (Zombie or Grooved); using the back of your fingernail, rub the backing of the adhesive pad to activate the catalyst.

**STEP 9** Remove the adhesive backing and install the emblem, ensuring that the aligning pin on the lever will be placed in the hole in the emblem (PIC 7); press and hold the emblem in place for one minute, full bonding strength will occur in 24 hours. PIC 8

**NOTE:** If the motorcycle is to be operated before the 24 hour cure time has expired, use a good quality masking or painter's tape over the Emblem to assist in holding the Emblem in place until the cure time is over.



*Ride On!*